

SR 162 AIS RECEIVER

Low cost AIS Receiver

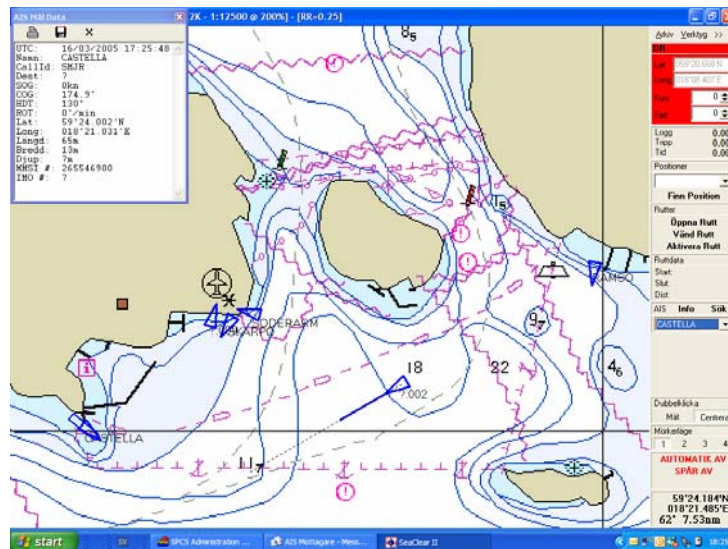


LOW COST DUAL CHANNEL AIS RECEIVER

- ◆ Low-cost
- ◆ Anti-collision tool
- ◆ Monitoring system
- ◆ Surveillance system
- ◆ Dual channel receiver
- ◆ NMEA compatible
- ◆ Simple connection and setup



With the SR 162 AIS RECEIVER you can display any AIS equipped vessel within VHF range on any type of AIS adapted display system. Information transmitted from vessels fitted with AIS Transponders include name, call sign, position, heading, speed, destination, type and size of vessel. The SR 162 AIS RECEIVER is compatible with any chart/ECS and radar system capable of accepting standard NMEA 0183 AIS sentences. The installation is quick and simple, requiring only the connection to a VHF antenna, and computer (PC). SR 162 AIS RECEIVER is the perfect complement to a radar and has an international standardized interface to various display systems like Electronic Chart Systems (ECS) or radars.



Technical specifications

SR 162 AIS RECEIVER is a compact dual channel synthesised VHF receiver designed to receive and decode transmissions from stations fitted with AIS.

Electrical

Power supply range : 9 - 15 Volts DC
Power consumption : 1.5 W

Data in/output

Bit rate : 38400 b/s (output)
4800 b/s (input)
Format : NMEA 0183 ver. 3.0
Output message : VDM and GPS data

Receiver

Frequency : AIS1 161.975 MHz
AIS2 162.025 MHz
Sensitivity : -112dBm
Antenna impedance : 50 ohms

Physical

L x W x H: 115 x 75 x 28 (mm)
Weight : 400 g

Connector : VHF antenna BNC

Output/input port : 9 pin D-sub socket

Chart formats

PNG, BMP,
WCI, BSB/KAP
GEO/NOS.
TIF, JPG, PCX (calibration required)

Map Calibration tool included in SeaClear

SR 162 BE A PROFESSIONAL AT A PLEASURABLE PRICE



True Heading Dealer



Nybergsgatan 6B
114 45 STOCKHOLM
SWEDEN
Phone +46 8 6609060
Fax +46 8 6618020
info@trueheading.se



www.trueheading.se